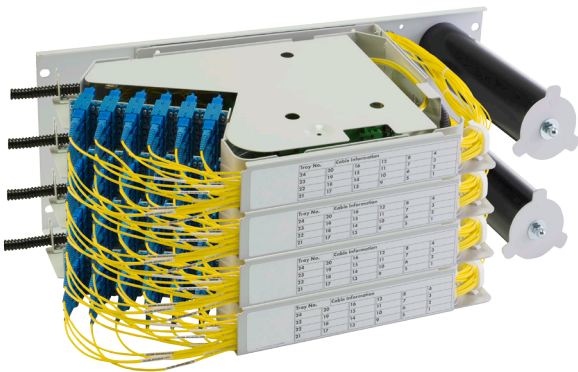


OPTICAL DISTRIBUTION FRAME

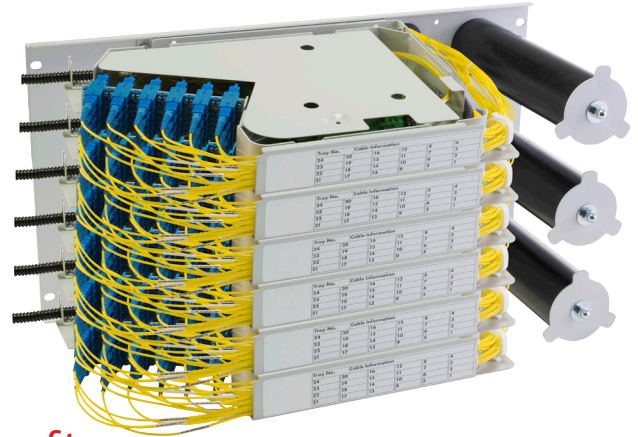
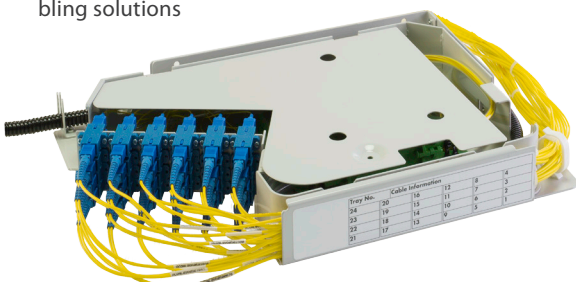
Pivoting Tray, Rear Mount System

This rear mounting Optical Distribution Frame (ODF) comprising multiple 1U Rear Mount Patch Panels utilises a pivoting tray design, with patch cord mandrels fitted to the right of the trays. It is ideally suited for 19" or ETSI racks with either rear or front fitting mounts. When combined with Cable Break Out units, it provides flexible cabling access. The modular 4u or 6u Optical Sub Racks are an expandable frame concept with integrated cable management to provide a future proof design. Fibres are protected at all times and patch cord routing carefully controlled.



Features

- Rear mountable in 19" or ETSI racks in widths of 600mm or 900mm as standard
- Expandable back plates mean ODF capacity can suit the application, for example per 6-way Optical Sub Rack, 288 fibres (based on 48 terminations per tray on LC connectors), 144 fibres (based on 24 terminations per tray on SC or E2000 connectors) or 96 fibres (based on FC or ST connectors)
- Integrates with Cable Breakout Units of varying capacities, to route fibre tubes from the bottom of the rack to the individual trays via 10mm diameter conduit
- Stackable, hinged splicing cassette trays (maximum 3) each with a 12 fibre splice capacity, manufactured using UL94-V0 rated CYCOLAC® VW300 ABS thermoplastic fire resistant resin
- Protected on tray fibre routing
- Patch cords are routed left to right through a front concealed routing channel and over vertically mounted storage mandrels for full bend radius control
- Solid steel lid protecting pigtails and splicing zones
- Reverse style tray also available where patch leads are routed and managed from right to left
- Splitters and ribbon fibre splicing can be accommodated
- Patching only options for hydras and preterminated cabling solutions



Benefits

- Shallow depth means they can be used where space is limited or back-to-back cross-connect racks
- Connector types to suit application. Fibre type and for non-standard interconnects can be varied on a single platform
- Integrates with Cable Breakout Units
- Simple, practical, secure and highly flexible routing from rear to front of panel
- Crush resistant tubing protects fibres when being routed within tray
- Splice tray designed to control bend radius while ensuring ease of access for splicing
- Secure, bend radius managed patch cord routing without protruding in front of panel with large labelling field for port identification
- Integrated mandrels mounted to the side and/or centrally to dress patch cords and provide cable management
- Trays for WDM and splitter applications available



OPTICAL DISTRIBUTION FRAME

Pivoting Tray, Rear Mount System

Example Ordering information

4 Way Optical Sub Unit - Pivoting Tray, Rear Mount Back Plate

Part Number	Description
MCO0289	96 Fibre Module 19" c/w 4 x SC/APC 24 Way Trays
MCO0279	96 Fibre Module 19" c/w 4 x SC/PC 24 Way Trays
MCO0280	96 Fibre Module 19" c/w 4 x LC/PC 24 Way Trays

6 Way Optical Sub Unit - Pivoting Tray, Rear Mount Back Plate

Part Number	Description
MCO0266	144 Fibre Module 19" c/w 6 x SC/APC 24 Way Trays
MCO0284	144 Fibre Module 19" c/w 6 x SC/PC 24 Way Trays
MCO0285	144 Fibre Module 19" c/w 6 x LC/PC 24 Way Trays

i Other configurations available on request

Standard Installation Kits Include (Per Tray)

Description
12 way splice cassette (up to 3 including 1 lid)
24 x 45mm splice protectors (60mm available on request)
Cable ties, saddles clips, laser warning label
Cage nuts and fixings

i Other installation kits including additional copex (sold per metre) available on request

Related Products and Additional Accessories

Part Number	Description
MCO0039	4 Way Cable Breakout Unit (c/w copex tubing)
MCO0027	8 Way Cable Breakout Unit (c/w copex tubing)
MCO0277	12 Way Cable Breakout Unit (c/w copex tubing)
MCO0013	16 Way Cable Breakout Unit (c/w copex tubing)
MCO0278	24 Way Cable Breakout Unit (c/w copex tubing)
10-00009	Rear Copex Mounting Clip
10-00304	Rear Copex Mounting Cage
MAC0020	Copex Tubing (per metre)
MCO0003	4-Way Rear Mounting Back Plate
MCO0075	6-Way Rear Mounting Back Plate